



## Setting of FileZilla (for Mac)

### Introduction

FileZilla is an FTP client software developed as open source. This manual uses the free version "FileZilla version 3.54.1" from [the FileZilla project](#).

Please prepare the [\[SpinNet Access Information Sheet\]](#), in advance, as you will need [\[Mail address\]](#) and [\[Mail password\]](#) for the setup process.

Hereafter, "SpinNet Access Information Sheet" will be referred to as "Access Information Sheet".

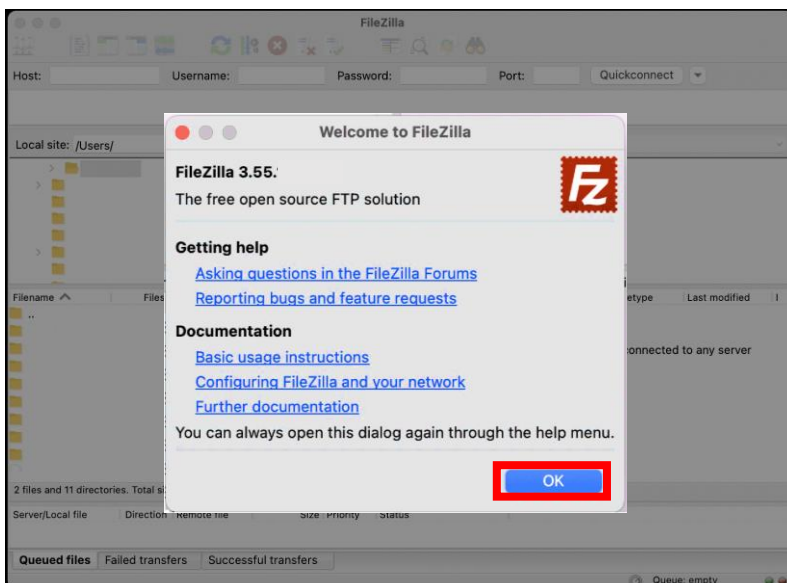
### Step 1

Launch "FileZilla".

"Welcome to FileZilla" window will open when you launch it for the first time, when a window opened, you click "OK", and please close this dialog.

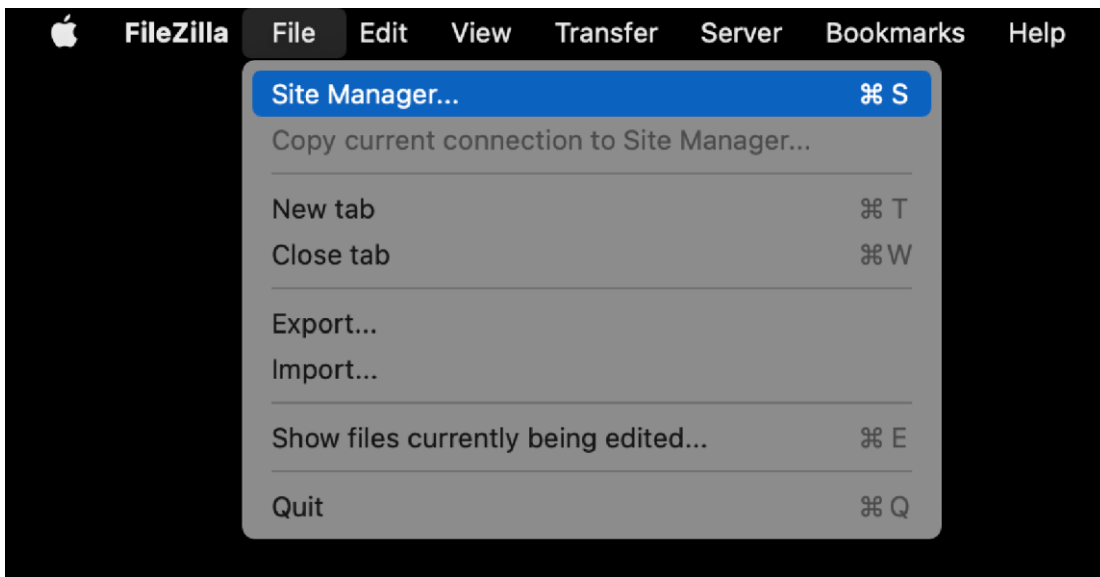


[Display at first startup]



## Step 2

Choose "File" from menubar and call "Site Manager".

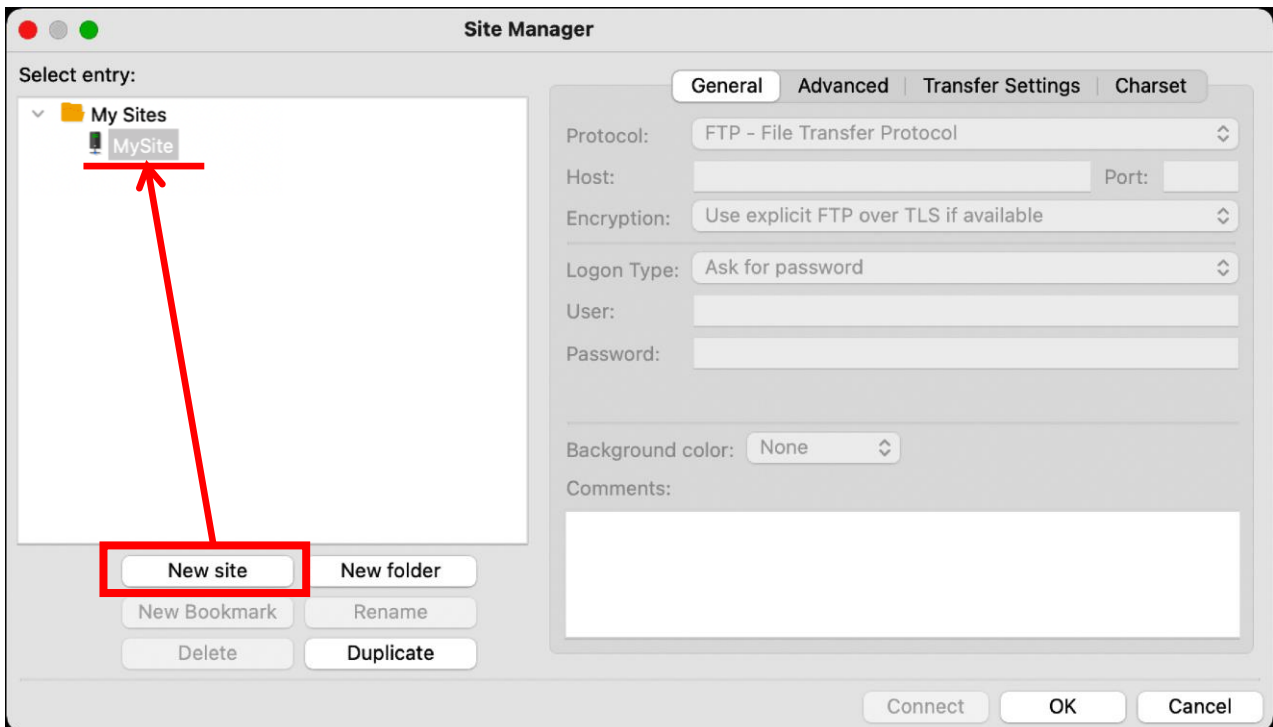


## Step 3

Click "New site" and make a new entry.

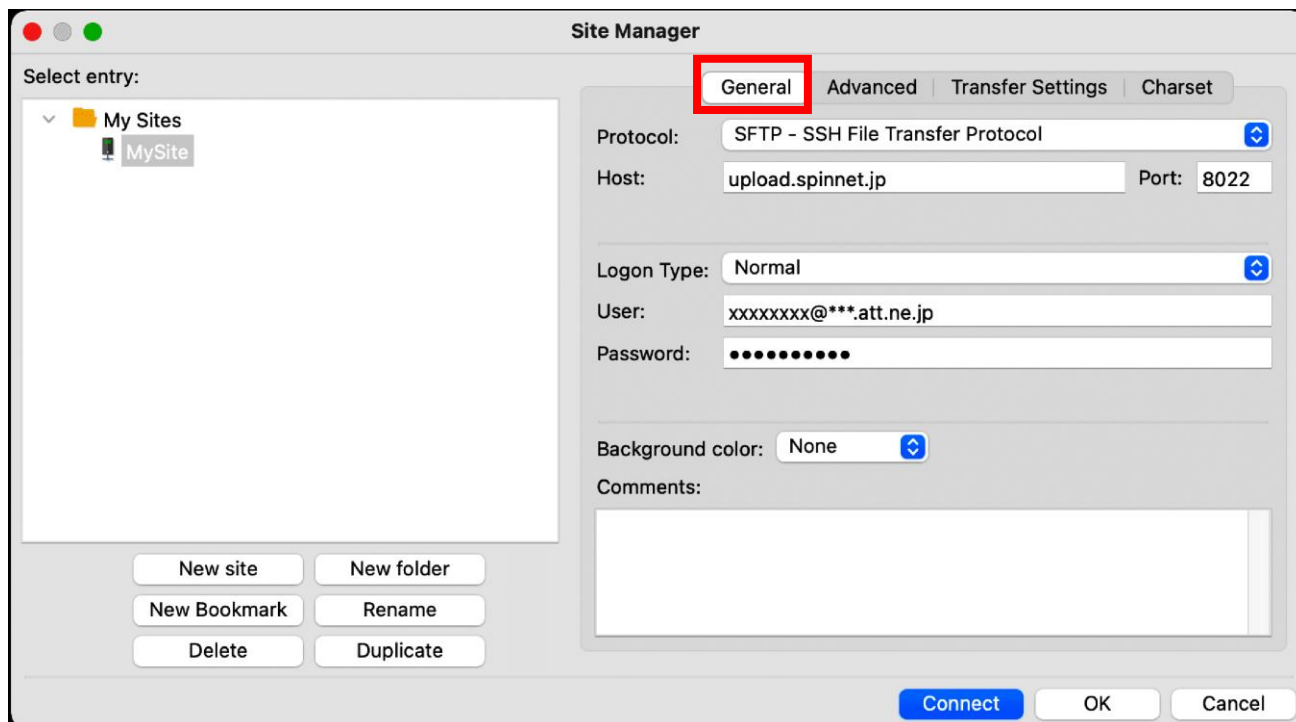
In this manual, We have named this entry "MySite" here.

※Step3 and Step4 are work to carry out only at the time of the first connection.



## Step 4

Choose a tab of "General", and please input necessary information.

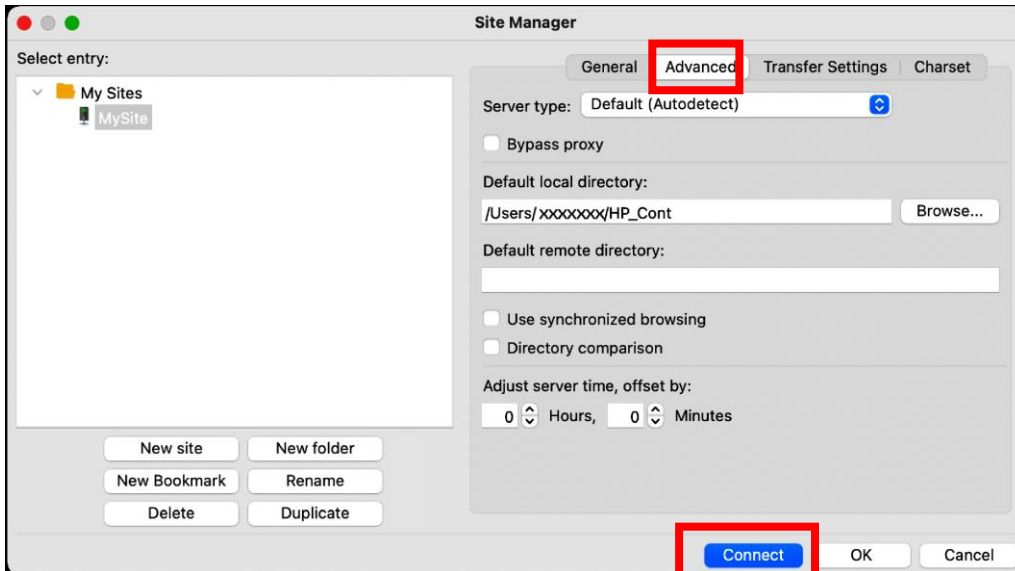


Name	Value
Protocol	SFTP – SSH File Transfer Protocol
Host	<b>upload.spinnet.jp</b>
Port	<b>8022</b>
Logon Type	Choose it among “Normal”, “Ask for password”, “Interactive”. When you choose “Ask for password” or “Interactive”, the password is not stored, and a dialogue for the input of a user and the password comes to be displayed at the time of connection.
User	<b>[Mail address]</b> ※Please confirm Access Information Sheet.
Password	<b>[Mail password]</b> ※Please confirm Access Information Sheet.

## Step 5

Choose the tab of "Advanced", and you input setting, and please click a "Connect" button. When you choose "Ask for password" or "Interactive", the input of the password is demanded.

In this case, please input your **[Mail password]** at the time of connection.

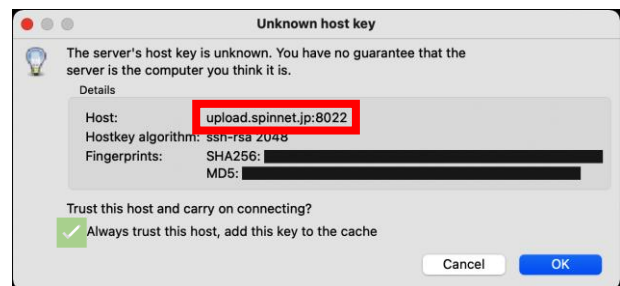


Name	Value
Server type	Default (Autodetect)
Default local directory	Click the "Browse" button to set the local folder where you are managing the content.

### Example of the error 1

In the case of initial setting, you choose "Always trust this host, add this key to the cache" after checking host name and click "OK".

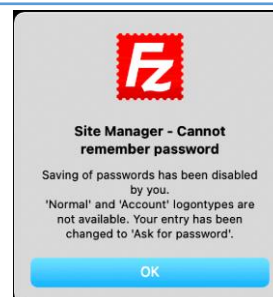
When you take the wrong setting, or a dialogue is displayed suddenly, you choose the Cancel, and please confirm setting again.



### Example of the error 2

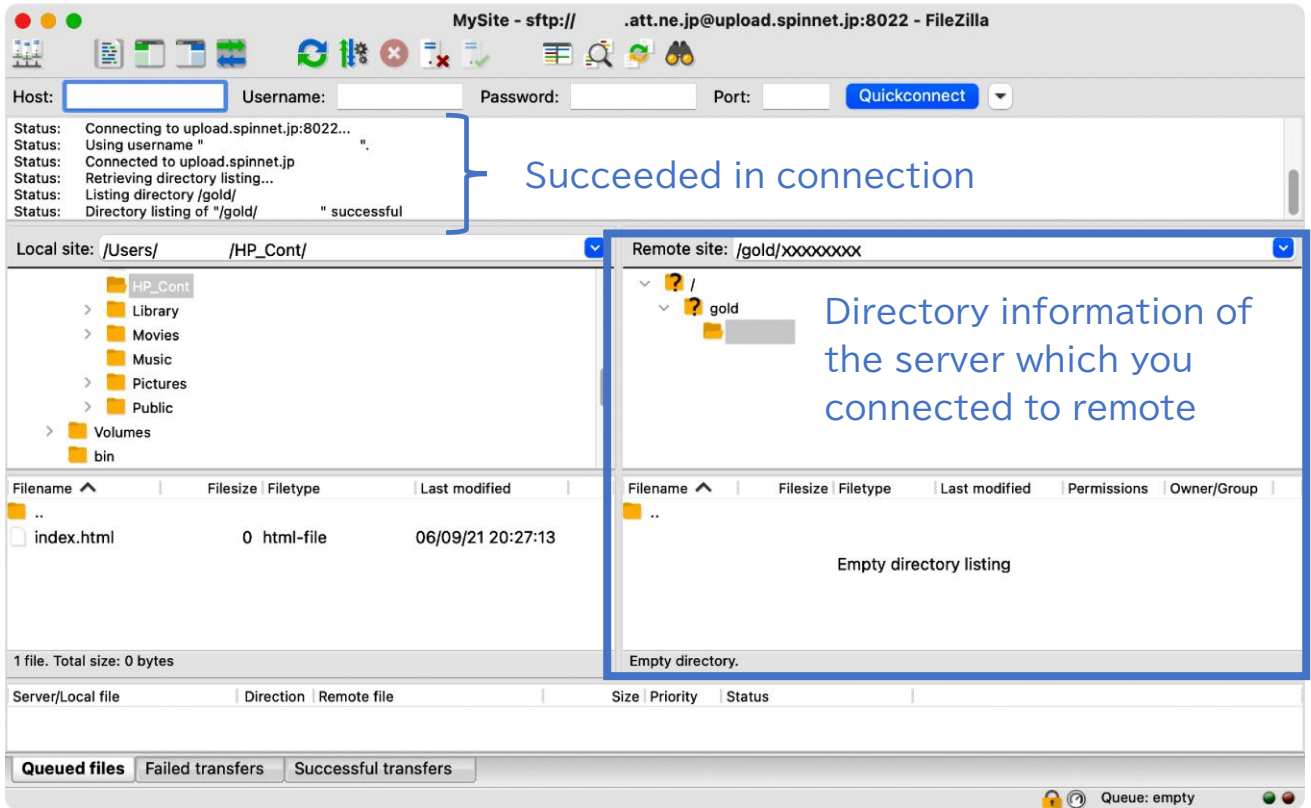
"If you select the "Normal" logon type, a dialog may appear. In this case, please refer to the last section of this document.

When you have logged in before in "Ask for password", FileZilla does not store a password.



## Step 6

When you succeed in connection, it becomes like the chart below.  
If the connection fails, please review the Filezilla settings again.

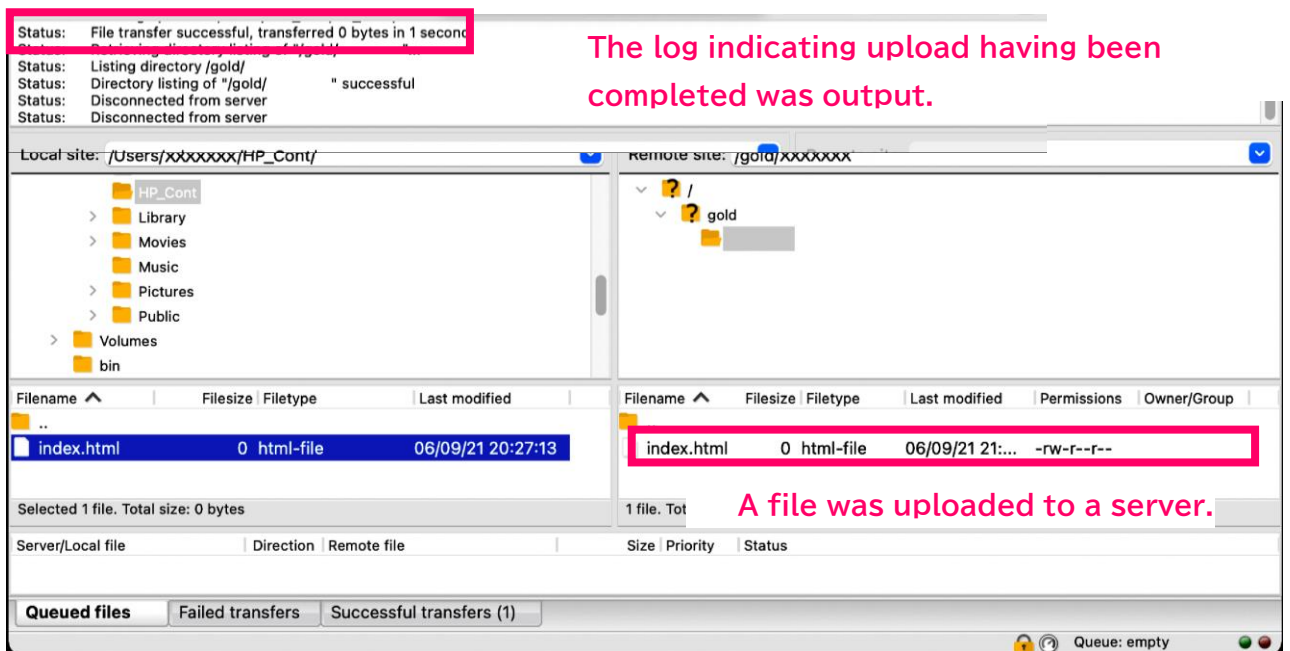
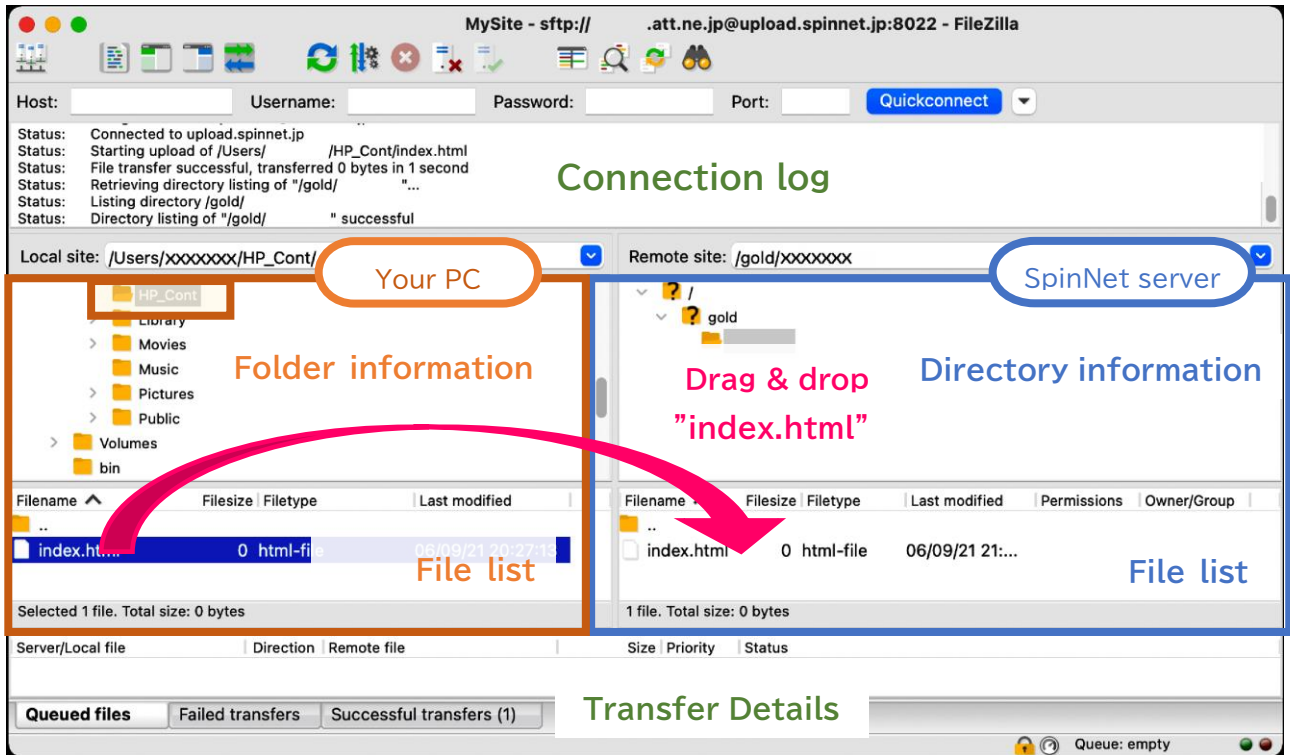


# Step 7

Step7 explains a procedure of the file upload.

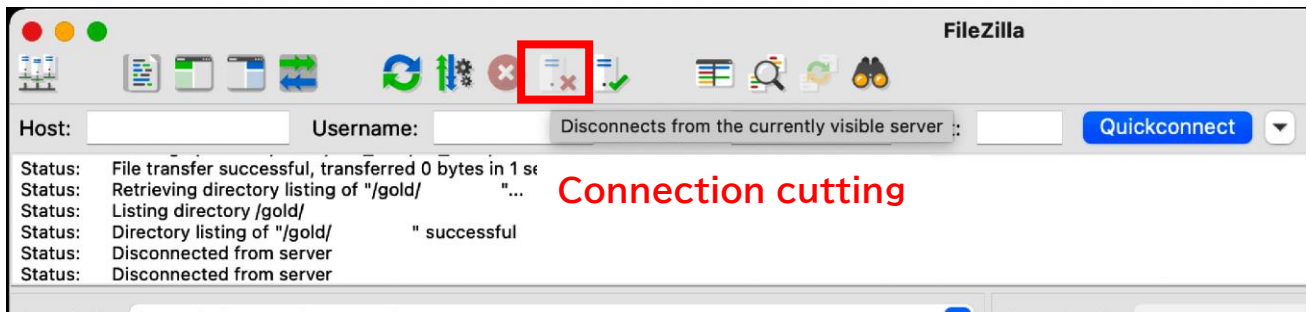
For example, there is "index.html" in the "HP\_Cont" of your PC folder.

You can upload a file by moving "index.html" to a list of files of the SpinNet server by drag & drop from a list of left files.



## Step 8

Click an icon of the connection cutting, and finish work.  
The remote connection will be disconnected.



With the above you complete setting.

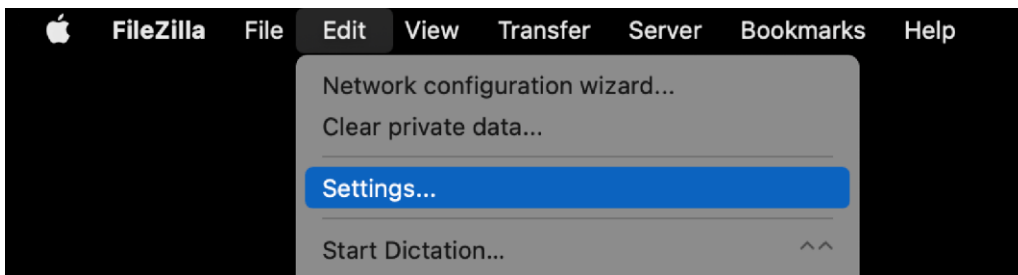
# Coping when you cannot let FileZilla store a password

## Introduction

This section explains what to do if you cannot get FileZilla to save the ID and password information used to login to the SpinNet server.

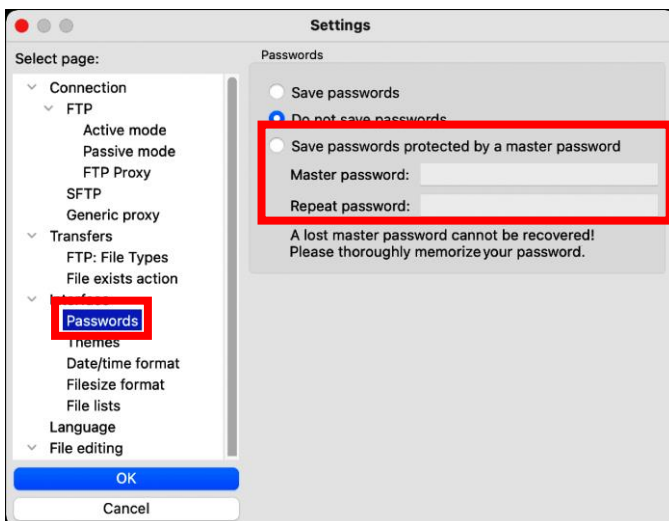
## Step 1

Choose "Edit" from menubar, and please click "Setting".



## Step 2

Click "Passwords" and choose either of "Save passwords" "Save passwords protected by a master password" and you click "OK" and close a setting window. As the password is important information, you recommend that you protect it by a master password.



With the above you complete setting.